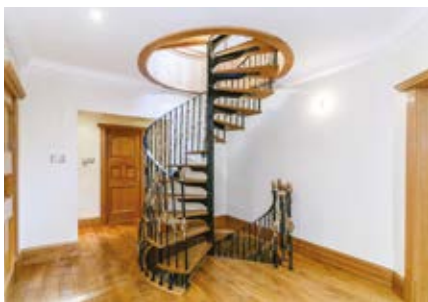


Tree Tops, 19 Chellow Lane, Bradford BD9 6AX

Guide Price £995,000*

UNIQUE SIX BEDROOM DETACHED MANSION ON 1.25 ACRES OF LANDSCAPED GARDENS



This magnificent and uniquely designed six bedroom detached mansion sits on 1.25 acres of landscaped gardens including a tree-lined backdrop and stream, and is situated in the scenic Chellow Dene considered to be the gateway to the Yorkshire Dales. Within 2.5 miles of the property there are two golf clubs, the Royal Infirmary (0.5 mile) and Bradford with its wide range of shopping amenities and mainline station is to Manchester, Leeds and York is less than 3 mile away. Leeds Bradford Airport is 9.5 miles distant. The Yorkshire Dales National Park lies to the north (19 miles), offering some of the country's most striking countryside. This detached mansion sits behind secure electric gates with in/out driveway. Internally the property has an array of high quality fixtures and fittings including under floor heating throughout, stone mullioned windows, and bespoke wooden flooring and lighting. The external doors have been constructed for extra security along with motion detectors and an alarm. This is an

exceptional property and an internal inspection is highly recommended. This property will be of interest to end user occupiers and investors.

ACCOMMODATION

6 bedrooms, 8 bathrooms / W.C's, 3 reception rooms, dining room, large kitchen / breakfast room, entertainment hall / gym with swimming pool under floor, sauna room, a plant room, laundry room, office, 2 storerooms and a large double garage. Please refer to floor plan for more details. GIA: 7588 Sq.ft / 704 Sq.M

TENURE

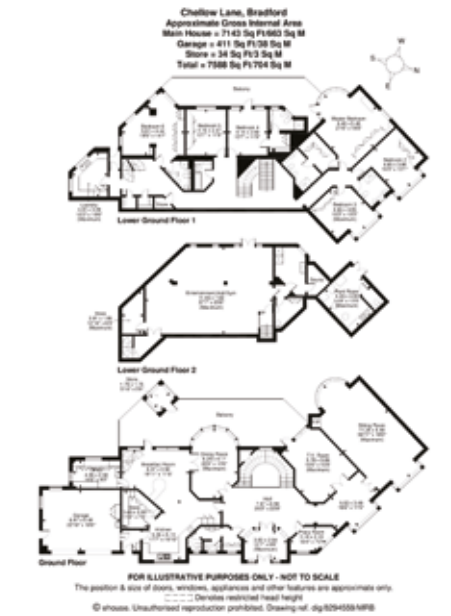
Freehold

LOCAL AUTHORITY & TAX RATING

Bradford Council: 01274 432 111
Council Tax Band: H

VIEWING TIMES

By appointment through the Auctioneers.
Internal viewing is highly recommended.



STARTING BID

FINAL BID

NOTES

SOLD UNSOLD SOLD PRIOR WITHDRAWN