

Lot 2

By order of A2 Dominion Housing

32 Meadow Road,
Salisbury SP2 7BN

GUIDE PRICE: £110,000*



VACANT COTTAGE IN NEED OF UPDATING

This terraced cottage, believed to have been erected in the late Victorian era, has been extended to the rear and offers two bedroom accommodation. The property is erected of brick under a pitched tiled roof and is being sold with the benefit of vacant possession. The house is in need of updating although there is gas central heating and mainly UPVC double glazed windows. Meadow Road is situated to the North West of Salisbury Town Centre and within easy reach of travel connections and shopping facilities.

ACCOMMODATION

Entrance Hall, Living Room, Dining Room, Kitchen, Lobby, Bathroom, First Floor Landing, Bedroom One, Bedroom two, Garden.

TENURE

Freehold

LOCAL AUTHORITY & TAX RATING

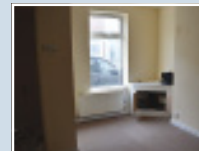
Wiltshire Council 0300 456 0100
Council Tax Band: D

VIEWING TIMES

28/3 @ 11.30am, 11/4 @ 11.30am

PLEASE NOTE

1. The special conditions of sale provide that the purchaser is to pay an additional sum of 1.25% + VAT of the purchase price towards the vendor's expenses.
2. This lot will not be sold prior to auction.



STARTING BID

FINAL BID

NOTES

SOLD UNSOLD SOLD PRIOR WITHDRAWN