

LOT
6

90 Willenhall Drive, Hayes, Middlesex UB3 2UX

Guide Price £90,000*

FIRST FLOOR FLAT CLOSE TO TOWN CENTRE, IDEAL FOR INVESTMENT



The property is situated in a popular development off Botwell Lane, being less than a mile from Hayes Town Centre with its range of shops and Elizabeth Line Station. There is also easy access into the main towns of Uxbridge, Southall and Ealing. Good road links serve the area, in particular the A4 and M4 that connect to Central London, Heathrow London Airport and The West. There is excellent access onto the A40 and M40 as well as the M25 London Orbital Motorway. The area is well served by bus routes and recreational facilities. The property is a first floor purpose built flat that is arranged as a one bedroom unit with an open plan reception and kitchen. The property has electric heating and would benefit from some updating and modernisation throughout. There are communal grounds and parking to the exterior. The flat is sold with vacant possession and will be of interest to investment buyers.

ACCOMMODATION

Reception/Kitchen, Bedroom, Bathroom, Communal Grounds and Parking.

TENURE

Leasehold - 99 years from 1st January 1986, thus approximately 58 years unexpired. Ground Rent £150 pa Maintenance approx. £1200 pa

LOCAL AUTHORITY & TAX RATING

London Borough of Hillingdon

Council Tax Band B

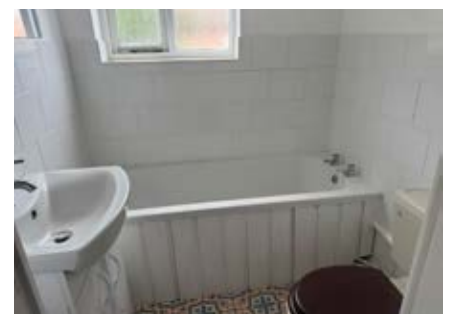
EPC Band D

VIEWING TIMES

Tuesday 9th June @ 11 - 11.30am

Saturday 13th June @ 11 - 11.30am

Wednesday 17th June @ 11 - 11.30am



STARTING BID

FINAL BID

NOTES

SOLD UNSOLD SOLD PRIOR WITHDRAWN