

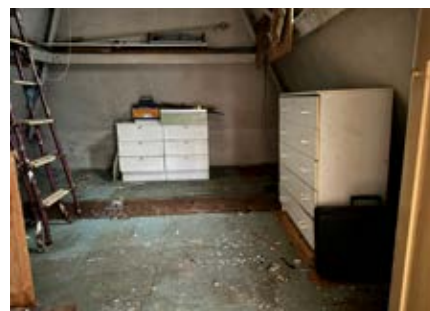
LOT
1

By order of the Executors

Top Floor Flat, 24 Somers Road, Reigate, Surrey RH2 9DZ

Guide Price £195,000*

**SPACIOUS TOP FLOOR TWO BEDROOM CONVERSION FLAT
IN NEED OF COMPLETE UPDATING THROUGHOUT**



The dwelling is situated in a very popular road within close proximity and walking distance of the local town centre with shopping facilities and in particular the main line station that connects into London. Good road links are easily accessible including the M25 London Orbital Motorway that is within two miles. This provides excellent access to both London Airports at Heathrow or Gatwick. The area is well served by local schools, bus routes, recreational facilities and open spaces. Further facilities and rail services are available within two miles at Redhill. The property is a top floor spacious two bedroom conversion flat within a period dwelling. There is residents parking to the front and communal gardens to the rear although they could benefit from attention. The flat does have gas central heating but otherwise is in need of complete updating and modernisation throughout. There is scope to reconfigure the layout subject to obtaining any necessary consents that may be required. The flat has a very spacious eaves space also. This dwelling is sold with the benefit of vacant possession.

ACCOMMODATION

Hallway, Bathroom Leading to Large Eaves Storage, Separate WC, Kitchen, Bedroom One, Bedroom Two, Reception Room.

TENURE

Leasehold approximately 60 years Unexpired.

LOCAL AUTHORITY & TAX RATING

Reigate and Banstead Council Tax Band: C
EPC pending

VIEWING TIMES

Saturday 11th October @ 11.30 - 12 noon
Wednesday 15th October @ 11.30 - 12 noon
Saturday 18th October @ 11.30 - 12 noon
OPEN SESSIONS - NO NEED TO BOOK IN



STARTING BID

FINAL BID

NOTES

☐ SOLD ☐ UNSOLD ☐ SOLD PRIOR ☐ WITHDRAWN